

Verif-i Remote Navigation QC

Introduction

Traditionally, Navigation QC has always been conducted by personnel onboard the crew.

We at Verif-i believe that our truly independent Navigation QC can be performed entirely remotely and without compromise, providing significant cost savings and reduction in HSE exposure.

SeisCloudNAV

We have teamed up with FGPS who are providing *SeisCloudNAV* and together with our expert QC consultants, can provide a full Navigation QC service from our onshore office. Data from the vessel is seamlessly delivered to the cloud using *SeisCloudConnect* service where *SeisCloudNAV* performs its automated first pass QC using client provided survey wide specifications. Once data has been downloaded to the cloud, an overall pass/fail result for each sequence is available in near real-time.

As *SeisCloudNAV* is securely hosted in the cloud, anyone with valid login credentials can view and analyse the results using a suitable browser from anywhere in the world.

Navigation QC Consultants

With all necessary data (P2, P1, SPS, Nav Logs etc.) available in the cloud, Verif-i's office-based Navigation QC Consultants are then able to perform all independent Navigation QC duties normally conducted on the vessel.

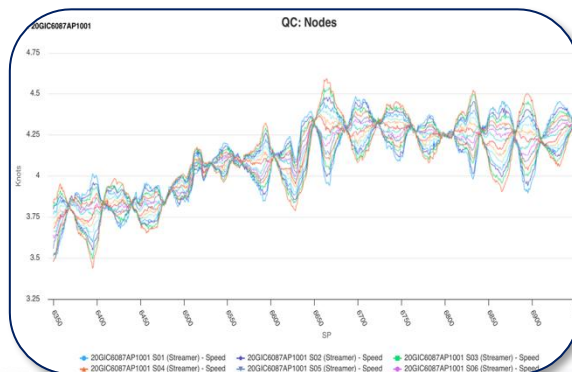
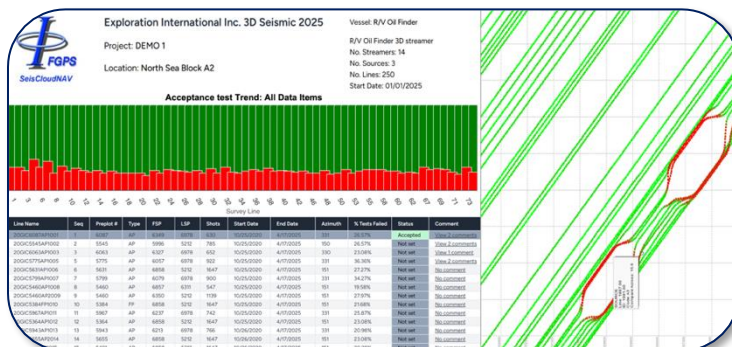
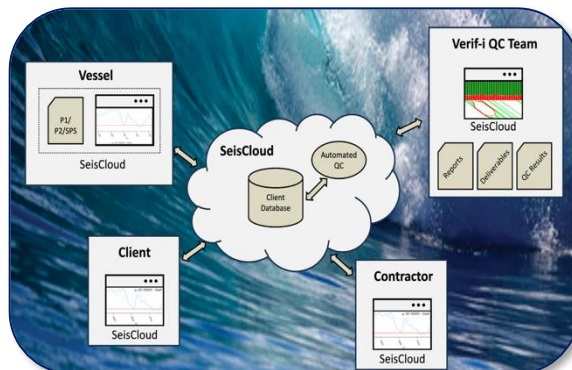
As part of our approach to the accuracy of positional and navigation data, we ensure that all team members are on board with the survey specifications. The quality of data is determined according to how closely the data approximates its true value. The client, the contractor and our Verif-i QCs are all key members of this central team.

Remote Navigation QC is further supported by the Lead QC onsite and crucially, a good communications plan between the crew, the client and our QC Consultant.

Technical Audits

Moreover, it is essential to ensure the equipment is fully functioning prior to the start of the project

Verif-i can provide independent Factory Acceptance Test Auditing of equipment or infield technical audits covering the crew, recording equipment or source systems to provide peace of mind that equipment is in the best possible condition for the start of survey.



Navigation QC Services

We work with our clients to agree upon a detailed scope of work to align expectations and streamline processes. By understanding and agreeing on the SOW upfront, clients avoid surprises, ensuring cost efficiency whilst receiving high-quality results; long-term gains far outweigh any initial setup effort.



The scope of our services involves the entire project lifecycle from initial startup configuration checks through implementation QC reporting right through to project wrap up. Just some of the Navigation QC Services we provide are shown below.

Configuration

- Navigation System Configuration
- Setup/Project Configuration QC/Checks
- Geodetics

QC

- Survey Status
- Survey Wide Statistics and Trend Analysis
- Acceptance Tests
- Post Processing
- 4DQC
- Binning & Coverage Analysis

Reporting

- Daily/Weekly Reports
- Comprehensive End of Project Report

Adjustment & Feedback

- Configuration Adjustments
- Reshoot Planning

Deliverables

- Production of final deliverables.

FLQC

- Comprehensive First Line QC (FGPS)

Further Information

If you would like any further information on our Remote Navigation QC Services, our Factory Acceptance Test Audits or our infield Technical Audits, please contact us using the details below.

